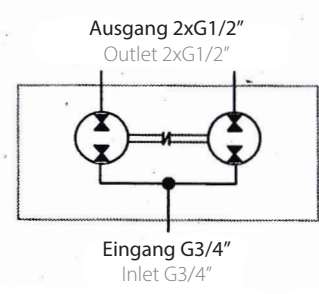
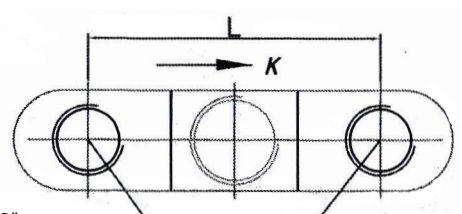
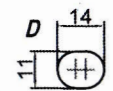
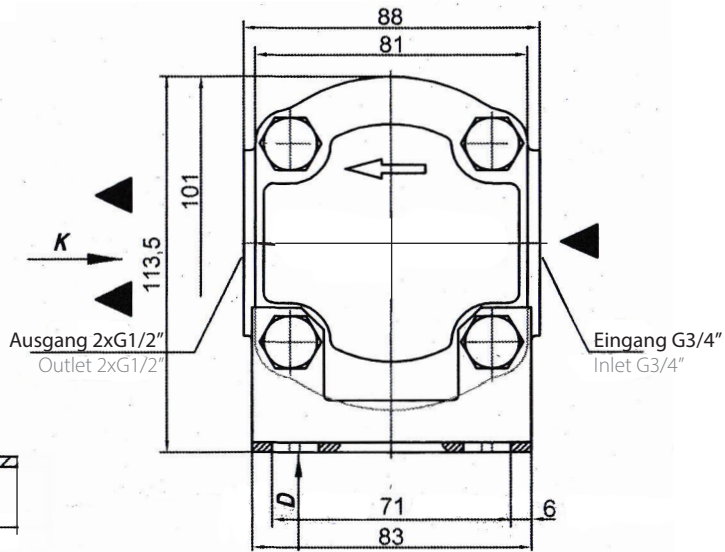
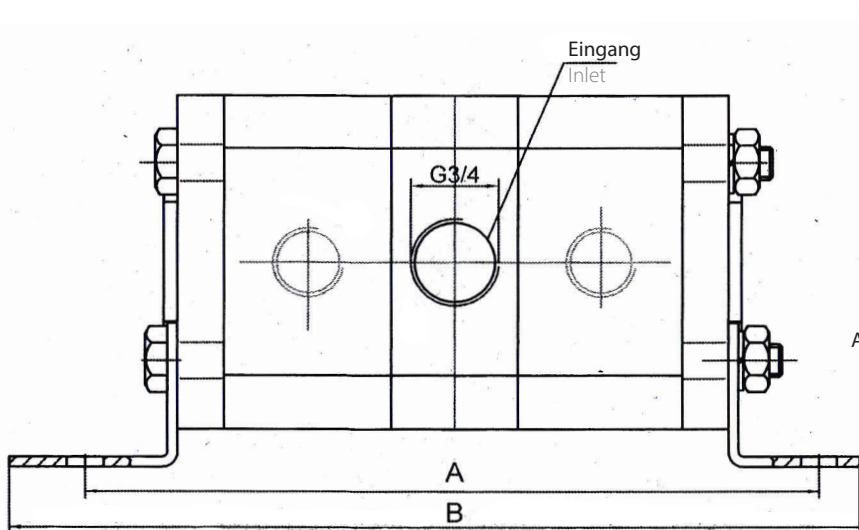


20FD.../2R 750 G

20FD.../2R 750 G



Typ Type	Schluckvolumen Displacement	A	B	L	Max. Druck Max. Pressure	N
	cm ³ /rev	mm	mm	mm		rpm
*20FD6,3/2R...750 G	6,3	221	266	88	20	1500...4000
*20FD8,2/2R...750 G	8,2	226,8	271,8	91	20	1500...4000
20FD10/2R...750 G	10	232,9	277,9	94	20	1500...4000
20FD11/2R...750 G	11	237,1	282,1	96	20	1500...4000
20FD12/2R...750 G	12	239,7	284,7	97,2	20	1500...4000
20FD14/2R...750 G	14	245,8	290,8	100,4	16	1200...3000
20FD15/2R...750 G	15	248,8	293,8	101,9	16	1200...3000
20FD16/2R...750 G	16	252	297	103,5	16	1200...3000
20FD19/2R...750 G	19	262	307	108,5	15	1000...1800

Bei Druckunterschieden bis zu 30 bar zwischen den Elementen beträgt die Abweichung weniger als $\pm 1,5\%$.
Bei höheren Druckunterschieden ist mit einer Abweichung von 1 % pro zusätzliche 10 bar zu rechnen.

The flow division error is lower than $\pm 1.5\%$ with a pressure difference between one element and another until 30 bars.
For bigger differences we can approximate an error increase of 1% for each 10 additional bars.